

# KOLLER MILK SYSTEM

A PLEASURE  
FOR YOUR SKIN



[whirl.rkoller.com](http://whirl.rkoller.com)

**KOLLER** WHIRL-SYSTEMS



# KOLLER MILK SYSTEM

## A PLEASURE FOR YOUR SKIN

Immerse yourself in a new, younger, more vibrant YOU.

A true fountain of youth for body and soul.

Feel more vital and youthful with the KOLLER-developed MILK System – 100% pure water without additives.

Oxygen: the source of life, also for the skin. Oxygen is essential for our skin and daily regeneration.

However, if the skin is not supplied with enough oxygen, it can quickly look tired and dull.

### Mode of Action

When activated, the bathwater is enriched with countless microscopically small air bubbles, making the water resemble milk.

These microscopic bubbles envelop your body, providing the skin with a high level of oxygen and promoting skin cell renewal.



Activation



10 sec.



30 sec.



50 sec.



# KOLLER MILK SYSTEM

## A PLEASURE FOR YOUR SKIN

### **The Advantages**

- Skin is supplied with a high level of oxygen
- Skin dries out less
- Cleansing of pores
- Skin regeneration
- Faster renewal and growth of skin cells
- Stimulation of the skin's collagen production
- Feel more vital and youthful

### **A Beneficial Treatment**

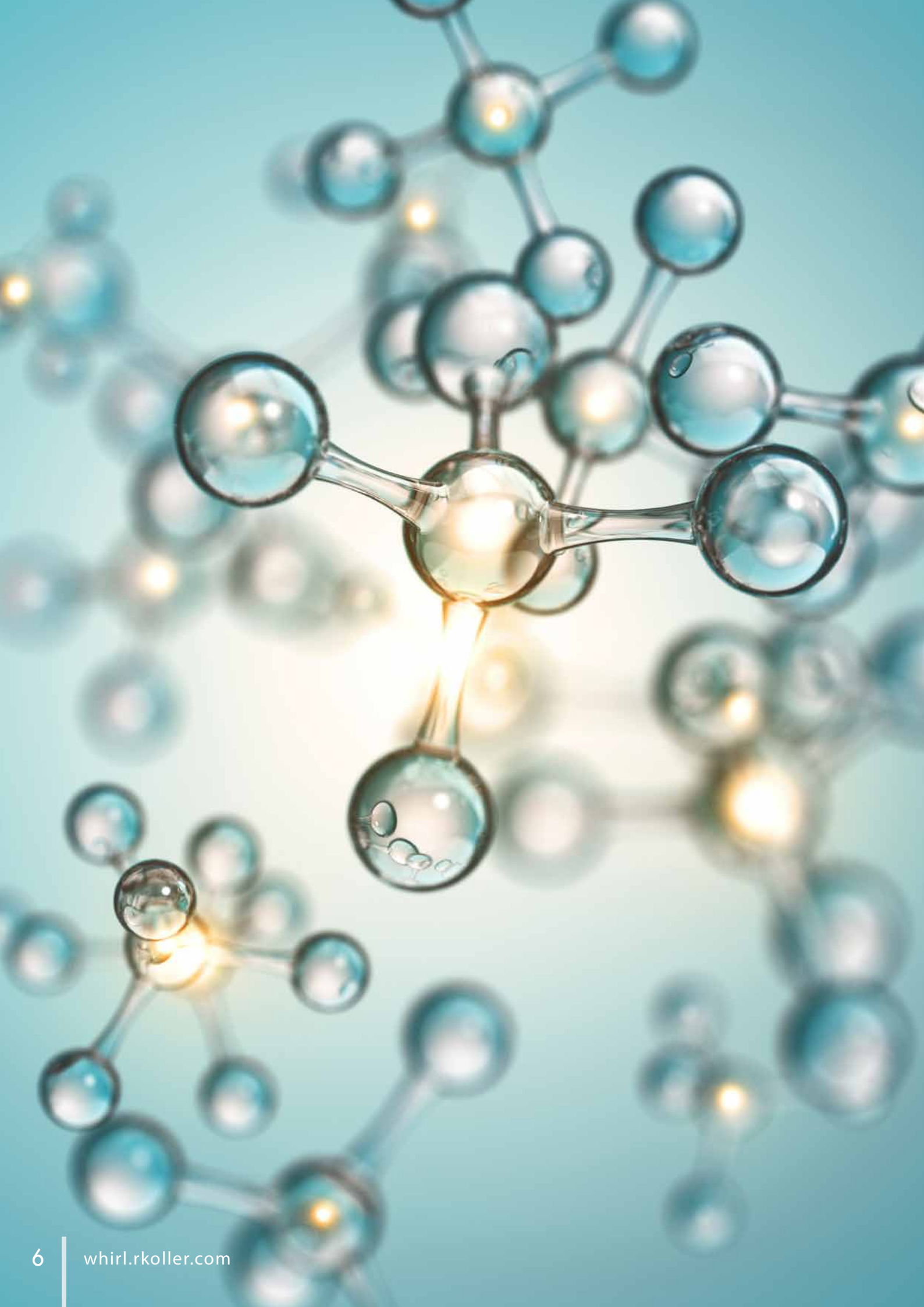
The skin's tasks are daily regeneration and nutrient absorption. For this, the skin needs a sufficient supply of oxygen.

Skin renewal is a continuous process. The KOLLER MILK System stimulates the skin's metabolism to renew itself more quickly.

Dead skin cells are replaced by newly generated cells. This process is significantly enhanced through the use of this system.

So that the skin can maintain its fresh, radiant appearance well beyond youth.

"Experience rejuvenated skin and feel younger – treat yourself and ask us about our KOLLER MILK System!"



# KOLLER MILK SYSTEM

## A PLEASURE FOR YOUR SKIN

### Technology

- Proper functioning of the system is guaranteed only with ORIGINAL Koller parts
- No system adjustment needed: Set up – Connect – Enjoy!
- Integrated sound absorber in the generator
- Visible parts available in Flatline design or alternatively with standard covers in plastic, brass, or stainless steel (V4A).
- Seamless transitions within the system to prevent residual water inclusions.
- The system drains automatically when the tub is emptied using a KOLLER drain and overflow fitting with residual water drainage.
- The MILK System is perfectly compatible with all whirlpool systems. However, only one system should be activated at a time. (System interference)
- 100% pure water without additives
- We would be happy to install the MILK System in your provided tub as well.

### Available in two different versions

#### with 2 inlet jets and a 1350W pump

- For tubs up to approx. 300 liters (standard bathtub)
- Max. water level 40 cm
- Multi-stage pump and pump housing made of stainless steel

*Visible parts available in plastic, brass, or stainless steel (V4A).*

#### with 4 inlet jets and a 1650W pump

- For tubs from 300 to approx. 800 liters, can also be used in smaller tubs, providing a faster Milk effect.
- Max. water level 80 cm
- Multi-stage pump and pump housing made of stainless steel.

*Visible parts available in plastic, brass, or stainless steel (V4A).*

**We would be happy to install the MILK system into your provided tub.**

# KOLLER MILK SYSTEM

A PLEASURE  
FOR YOUR SKIN



**KOLLER** WHIRL-SYSTEMS

**RUDOLF KOLLER Ges.m.b.H.**  
A-1210 VIENNA  
Brünner Straße 313-315  
Tel.: +43 1 604 43 33  
office.vienna.at@rkoller.com

A-3902 VITIS  
Rudolf-Koller-Straße 1  
Tel.: +43 2841 8207  
office.vitis.at@rkoller.com

**RUDOLF KOLLER spol.s r.o.**  
CZ-37701 JINDRICHUV HRADEC  
Dolni Pena 201  
Tel.: +420 384 370 410  
office.jhradec.cz@rkoller.com



CONTACT:  
**+43 2841 8207**  
**whirl.rkoller.com**